



friends

OF HU-FRIEDY

Colorvue[®]

Probes and Expos

The Visible Difference

Hu-Friedy



Colorvue®

- In this module you will learn:
 - Colorvue Probe Designs
 - Colorvue Features and Benefits
 - Colorvue Uses



Hu-Friedy



Introduction

- In addition to a full line of metal probes, Hu-Friedy offers Colorvue probes for the visibility and comfort you need in a replaceable plastic probe.
- Colorvue probes allow clinicians to obtain more efficient and accurate readings, resulting in more time for themselves and patient education.





Features and Benefits

- Vivid yellow tip and black markings provide increased intraoral visibility for faster and more accurate assessments.
- Flexible, rounded tip ensures greater patient comfort and acceptability.
- Convenient twist-on design allows for easy replacement of worn tips and use of larger diameter, ergonomic handle.
- Safe for use with implants.



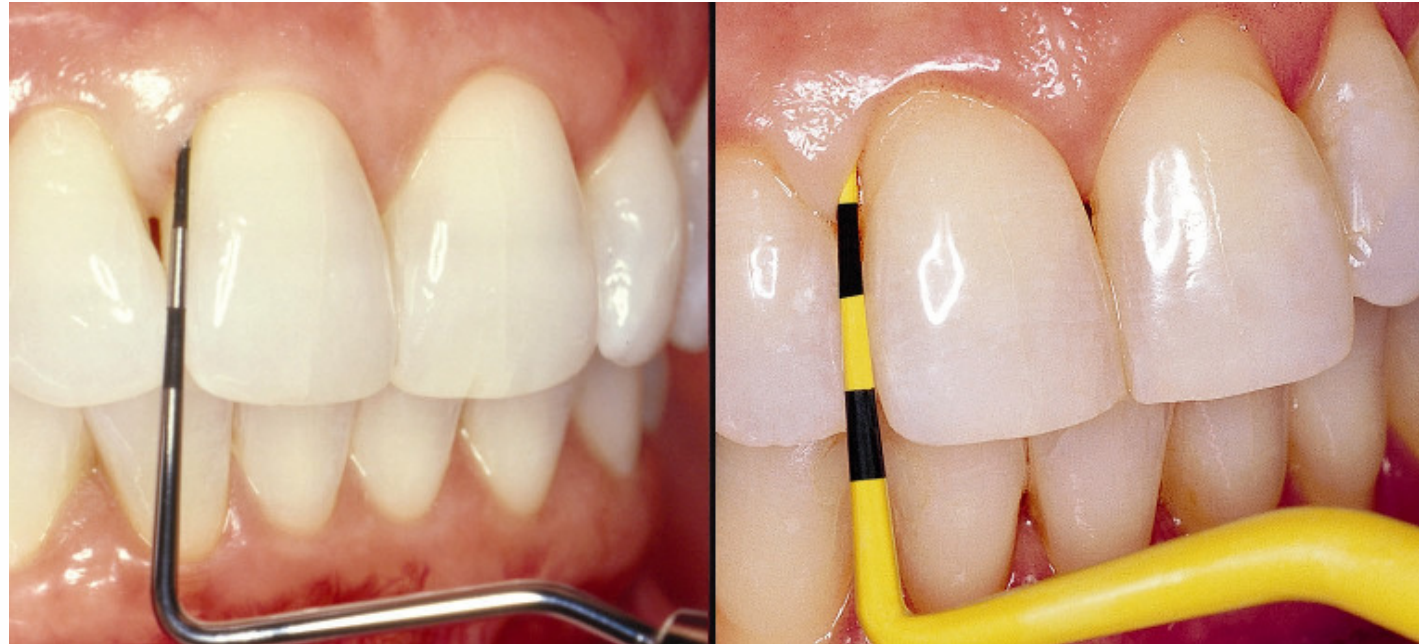


Periodontal Probe Uses

- Early in the patient examination, the patient's periodontal status must be determined.
- The probe is used to assess the patient's state of health or disease.
- The periodontal assessment involves examining:
 - Gingival consistency
 - Pocket depths
 - Attachment levels
 - Furcation involvement
 - Mucogingival junctions
- The data gathered in the assessment process is vital information to developing a comprehensive treatment plan for the patient.



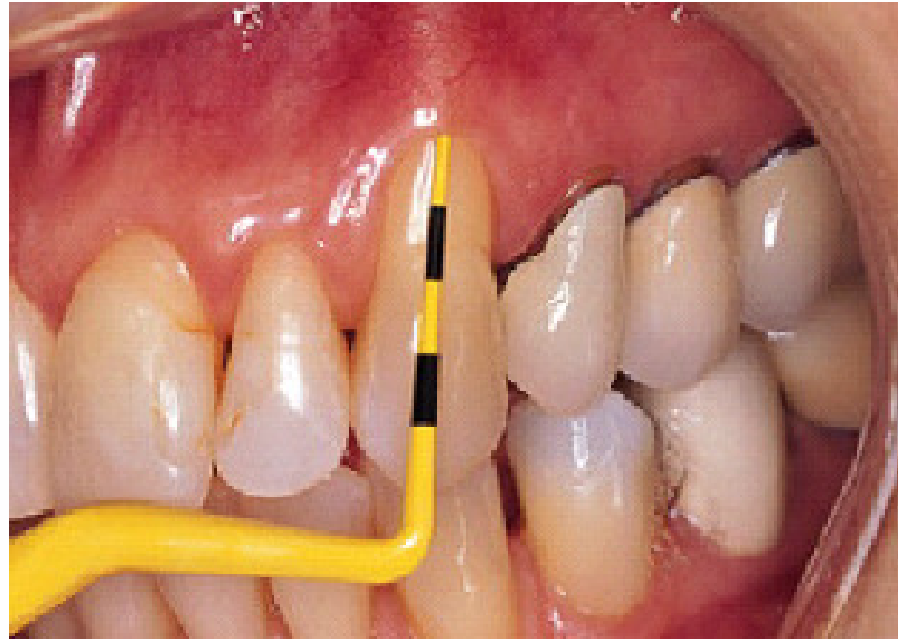
See the Visible Difference



- Compare the Colorvue probe to a standard metal probe.
- Colorvue's yellow tip with black markings provides superior contrast to the gingival tissue when measuring pocket depth.



Periodontal Probe Uses



- Gingival recession is easily measured with the Colorvue plastic probe.
- The excellent contrast of the vivid yellow probe color to the exposed root surface makes this easy to do.



Available in 4 Tip Designs



PCV11PT
3-6-8-11



PCV12PT
3-6-9-12



PCVWPT
(Williams)



PCVUNC12PT
(UNC)

- The twist-on design allows for easy replacement of worn tips.
- Markings will wear with normal use. Tips should be replaced approximately every 30 sterilization cycles.



Satin Steel[®] Handle



PH6

- Colorvue probes feature the ergonomically-designed Satin Steel handle.
- This lightweight, large diameter handle provides a secure, light and comfortable grasp.



Satin Steel[®] Expro Handle

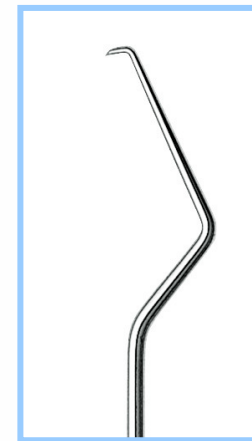
Three Satin Steel Expros are also available for use with Colorvue probes.



Explorer #17
(XP17/PH6)



Explorer #23
(XP23/PH6)



Explorer #TU17
Wilkins/Tufts
(XPTU17/PH6)



Summary

- Colorvue probes have a vivid yellow tip and black markings that provide superior contrast to intraoral structures for enhanced visibility.
- Available in 4 tip designs:



PCV11PT



PCV12PT



PCVWPT



PCVUNC12PT

- Also available as an expro with 3 explorer designs:
 - XP17/PH6 - XP23/PH6 - XPTU17/PH6



Conclusion

- As a clinician, Colorvue probes enhance visibility resulting in less eye strain.
- Your patients will experience greater comfort with Colorvue's flexibility and rounded tip.
- The large ergonomic handle will provide you with a comfortable grasp.
- Safe to use around implants.





Reference

- Intraoral photography courtesy of Dr. James Pavlatos.



Qualifying Question

- Thank you for taking the time to learn more about Hu-Friedy's Colorvue Probes and Expros.
- To earn your Hu-Points towards a product evaluation, please exit and answer the following question on the Member Resources Page:

Colorvue Probes are available in _____ tip designs and available as an expro in _____ explorer designs.

- a) 3, 2
- b) 3,3
- c) 4,2
- d) 4,3
- e) 5,3